

Analysis of Dominant Psychological Conflict of Don in Sarah in Girl in The Basement (2021) Movie Based on Sigmund Freud's Theory

Nofa Rizqawanti¹, Endang Susilowati²

Universitas Ngudi Waluyo^{1,2}

Email Correspondence : endangsusilowati@unw.ac.id

Abstract. This study focused on analyzing the psychological conflict of characters Don and Sarah in *Girl In The Basement* (2021) Movie. The researcher aims to analyze the characters' Id, Ego and Superego along the movie and find out the dominant personality structure. The writer used the psychoanalysis theory of Sigmund Freud to analyze the characters' psychological conflict along the movie. The writer used qualitative descriptive as the method, which help the author to classified each scenes into table with do the screen-shooting scenes and noting the script from each scenes. There are two results of the study. First, Don's Id lead him to lock Sarah in the basement as a punishment of ignoring Don's rule. Don's ego attract him to a manipulative nature to be able to cover up Sarah's true existence. The Superego that emerged in Don is when he remain responsible to Sarah and her children. Sarah's Id wants the freedom of life in her teenage years. Sarah's ego has a high desire to be able to live with the love of her life, Christopher. However, her Superego must take over when her father imprisoned her in the basement. Second, the writer finds the dominant Id, ego and superego on the characters Sarah and Don. Based on the 32 scenes already analyzed, the most dominant personality structure on the character Don is Id. While the dominant personality structure on Sarah's character is the Superego. Eventually Don, who is dominated by his Id, sank in a big problem. Sarah, who is dominated by her Superego, can be more mature in thinking, which led her to freedom. The writer recommend the readers to analyse the Id, Ego and Superego contained in the internal conflicts of Irene, Michael and Marie. Because they have very complex inner conflicts.

Keywords: Psychoanalysis, Id, Ego, Superego, Movie, Analysis

Introduction

Literary works come in many forms, and the written materials are such as novels, essay, poetry and many more. By the time, literature developed in so much forms that more acceptable for people nowadays, one of that kind of development is movie. Talk about movie, there still so much pros and contras that doubt is movie include part of literary works or not. In lately 19th centuries, movie commonly produced without script that conduct the talent's conversation. But along the development or era, literature have a big role in movie.

Movie or motion picture is a literary work that have a function as a communication media which formed by two sense, that are seeing and hearing with artistic expression and present audio visual. Movie considered as mass communication as realization of the combination of various technologies, such as sound recording, music, arts, photography, architecture and literature, and music. Moving picture that formed as a culture is movie (Efendi, 1986). Movie needs a script to ensure the plot is delivered well to the consumer. Script consist of narrative text that tell about universe's stories and tragedies, full of beautiful, formal or daily words packed in conversation or dialogue. So that, the basic of movie itself indeed literary works and movie has the same role as the another kind of literary works.

According to McLaughlin (1989) Movie has two elements, extrinsic and intrinsic that can build the success of the movie itself, one of the intrinsic elements is character. Character has important role to build up the story in literary work. Movie indeed has a storyline that can make people understand about what happen in the movie, and also have excitement to know the ending. Character is a special personality who can driving forced and as the differentiator between one to another. Character is the fundamental to give a vision to the viewer, so that they can choose which characters they want to give attention as the point of view how the storyline goes. According to Endraswara (2008), conflict appear as an output of problems that people face in different opportunity and consist problems of coexistence or the feelings from people, that is, the problems of love, desire, fear, death, religion, fear, lust, etc.

This not only increases the conflict in the story, but also makes it more interesting and exciting. Campbell (2010) stated that conflict appears when an individual experiences any

differences one another on a purpose that cause feelings like frustration and difficulty. Conflict divided into two parts, external conflict and internal conflict. External conflict triggered by interaction of people's surrounding, it usually comes in a relationship within the form of issues about verbal arguments, feud, arbitrariness, ideology, and many more. While internal conflict appear inside the people's mind or heart. People experience this conflict due to their goals, choices and ideals. This is arises when a person forced to make a decision between two or more commitments but he or she have to choose only one of them (Kvalnes, 2019). Most of the people usually less understand how inner conflict can affect people's life. People commonly unaware when they experience the inner conflict, while it can caused emotional damage such as aggression, apathy, anger and passivity. Inner conflict can cause people experience psychological conflict due to every contradiction in people's mind and heart. This problem lead the writer to analyze a movie entitled *Girl In The Basement* (2021) by using a literary psychology approach, specifically by Sigmund Freud's Psychoanalysis theory.

According to Freud in *Psikologi Sastra* book by Minderop (2013), personality theory divided into three parts, (1) Id, (2) Ego, (3) Superego. Freud's theory describes a number of psychological symptoms that underlie language issues. The id gives birth to the ego and superego. Freud resembles the Id as the King or Queen, Ego as the Prime Minister, and the Superego as Highest Priest. Valid Id likened absolute dictators, must be revered,spoiled, capricious and selfish; what he command have to quickly carry out. The Id is a mental force and instinct that compels individuals to satisfy their basic needs, including those for food and sex, while avoiding pain or discomfort. working methods, the Id is related to the pleasure principle, which states that one should always seek pleasure and avoid discomfort.

The Ego is the aspect of the personality which needs to adhere to the Id while pursuing the reality that the Id requires as a stress reliever. On the basis of this supposition, it may be argued that the Ego has the ability to tell the difference between illusion and imaginary. It erupts to ease some tensions since the ego acts according to reality's rules. Susanto (2012) stated when a person is maturing, their superego, which is a representation of many social norms and regulations, first encounters them when they are children and are subjected to socially conditioned rules, restrictions, and punishment. The Superego has evolved as the cornerstone of restraint.

In this paper, the writer wants to discuss about the main characters, Don and Sarah's with emphasizing the analysis of the dominant conflicts that happen from each characters through *Girl In The Basement* (2021) movie by using the literary psychology approach of Sigmund Freud theory by analyzing the structure contained in the psyche of the movie characters, namely the Id, Ego, and Superego.

Method

The writer used descriptive qualitative literary research as problem approach to analyze the object, and the data is presented with content analysis. According to Sutopo and Arief (2010), Qualitative research analyze and describe about phenomena, social activities, events, trust, behavior, perception and informant's thoughts as individuals or groups. In this research, the writer uses a movie entitled *Girl In The Basement* (2021) as the object. According to Morgan and Harmon (2001), there are several data collection techniques in developing the qualitative research, that are; 1) Coded Observations 2) Narrative Observations 3) Participant Observations 4) Archival Measures 5) Content Analysis 6) Questionnaires 7) Interview 8) Focus Group. From these data collection techniques, the technique that appropriate and suitable with the writer's research is Narrative Observations, which reading journals and books related to the theory and research. The second technique is content analysis, which the movie *Girl In The Basement* itself. Data collection was carried out by watching *Girl In The Basement* (2021) movie carefully, purposefully, and thoroughly. While watching the movie, the writer do a screen-shooting scenes and noting the script from each scenes with a note book about the psychological conflicts from Don and Sarah in the *Girl In The Basement* (2021) movie.

The procedure of analyzing the data is divided into some aspects. First, The writer conducted the data by watching the movie. Then, the writerscreen-shooting each scene that involve Id, Ego, and Superego the movie. Second, The writer collected scenes and conversation that show the existence of Id, Ego and Superego which were found in the movie. The scenes and its conversation listed and collected for preparing the analysis. Third, The writer identified the data found in the movie based on the case study. And fourth, The writer analyzed the data to determine the Id, Ego, and Superego of Don and Sarah while choosing what emotion the most dominant from each

character. Furthermore, the results of the analysis described in form of table and narrative paragraphs that contain each screen-shooting accompanied with its conversation as a proof to concrete the study.

Result and Discussion

Don and Sarah's Id, Ego, and Superego

According to Freud in *Psikologi Sastra* by Albertine Minderop book (2013), Id is the most fundamental layer of the psyche, containing intrinsic instincts (sexual and violent) as well as repressed urges. Ego is the personality that exists between the conscious and the subconscious. Id and Ego have no morals because they do not understand the value of good and bad. The Superego is also a function of parental instruction and association with values and social behavior patterns. Humans are required by their superego to always behave well.

In this early plot, the inner conflict that consists of personality structure, especially in the characters Don and Sarah.

Tabel 4 1 (Scene 1)

Scene 1 (02:07 - 02:57)



Family dinner that consist of Don as the father, Irene as the mother, Amy the first daughter and Sarah the last daughter. There's a debate between Don and Sarah because Don didn't give Sarah permission to hang out into a party.

Sarah: I don't see what the big deal is. It's just a party.

Don : The big deal is your attitude. Sit!

Sarah : Mom?

Irene : Listen to your father.

Sarah : Are you kidding me? You said I could go.

Amy : I, I can take her.

Don : Amy, stay out of it. You're not going! That's final. Go to your room!

Sarah : Okay.

The conversation above shows that Don's Id, which is anger, appears and dominates his ego to give Sarah a prohibition to go to the party. ID is a mental force and instinct that compels individuals to satisfy their basic needs, including those for food and sex, while avoiding pain or discomfort. Working methods, the Id is related to the pleasure principle, which states that one should always seek pleasure and avoid discomfort (Minderop, 2013). Don forces Sarah to obey his needs. Sarah ended up following her superego to obey her dad's needs. The superego is a component of human psychology that a person must adhere to and value as a social creature (Hall, 1956). Although at first Sarah had a change to follow her Id by arguing with her father.

But the things don't turn that way, Sarah has her own way to still attend the party without her parent's permission. And she going to the party with her boyfriend, Chris.

Tabel 4 2 (Scene 2)

Scene 2 (03:16 - 03:40)



Sarah running away from home to hang out with his boyfriend in the party

Chris : Heh, there she is. Let's get out of here. What, you catch hell?

Sarah : Yeah, but I threw it right back.

Chris : Right on.

From the scene above, we can understand that Sarah's Ego appeared. Ego is psychological aspect that seeks out reality. The function of the Ego is to fulfill and express Id desires in line with opportunities and limitations in actual life (Pervin and John, 1997). Sarah still running away although she knows what is the consequences. That night, Sarah successfully feed her Id and fulfilled her desire as a teenager girl.

After the dinner, Irene try to talk with Sarah, the Don comes madly want to open Sarah room. Then they realized Sarah already gone.

Tabel 4 3 (Scene 3)

Scene 3 (03:57 – 04:39)



Don and Irene try to talk with Sarah since she looks mad because she can't go to the party, but they found Sarah is not in her room

Don : (Banging on door) Open up, Sarah!

Irene : She just probably wants some time.

Don : Yeah. She wants everything special. Everything special.

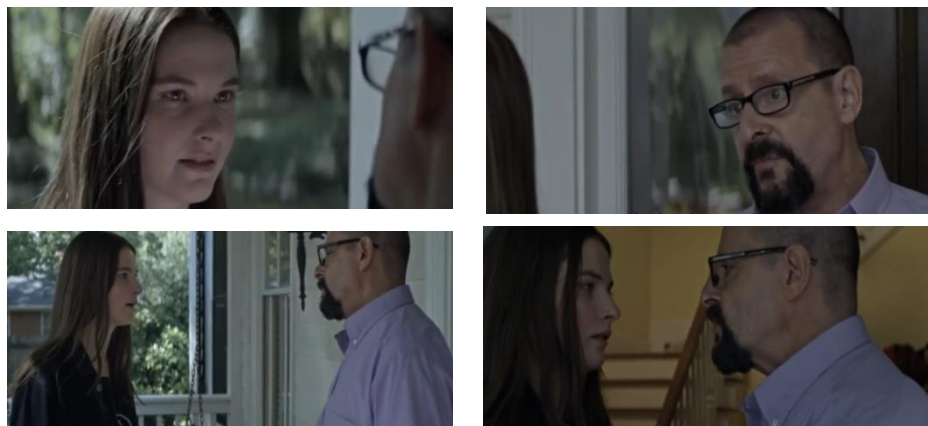
Don : (open the door) She's a problem.

The dialogue above show how mad Don to Sarah. And here, Don's Ego appears. This is consistent with Pervin and John (1997). Don want to talk with Sarah because of his disrespectful attitude at the dinner with his own way. When he found out that Sarah isn't in her room, his madness comes up. Sarah didn't obey his rules, while it's a must at their house. Irene can't do anything cause her husband is so temperamental. He feeling upset with his daughter's decision at this moment.

After having a long fun night, Sarah went home early in the morning with her boyfriend. Sarah seems so happy and delighted, but not with Don. Don wait for Sarah in the house terrace, unhappy indeed.

Tabel 4 4 (Scene 4)

Scene 4 (07:11 – 08:40)



Don waiting Sarah in front of the door after her “sneaky” party and they argued

Don : I thought I said no. You can't make up your own rules.

Sarah : Whatever.

Don : We're not done. Was that your boyfriend?

Sarah : That's not your business.

Don : Oh, oh, did your mother and I give you permission to date motorcycle boys?

Sarah : You know, the day I turn 18, I'm out of here and you're never gonna see me again!

Don : Come here. When you're in my house, you follow my rules.

Sarah : Get off me!

This dialogue shows how Don and Sarah's Ego comes up in the same time. This is linked with Freud theory in Minderop (2013) about Ego. Freud stated in *Psikologi Sastra* by Minderop book (2013), Ego is the personality that exists between the conscious and the subconscious. The Ego is in charge of delegating the primary mental functions. Sarah and Don don't have a good relationship in their family, and this thing comes up when they violate one another.

After the small debate, Sarah went into her room and take a rest. After a while, her sister, Amy, comes to cheer Sarah. Only Sarah can stand his father's rudeness in their family, because Amy and Irene always obedient to whatever the Don wanted.

Tabel 4 5 (Scene 5)

Scene 5 (08:57 – 10:27)



Sarah expressed her frustration at her father for being too controlling. Sarah also announced her plan to Amy and Irene that she would be leaving home and living independently when she was 18 years old

Sarah : Somebody has to stand up to him. I mean, he's crazy. Mom just lets him walk all over her.

Amy : Don't mess with him, okay?

Irene : You're only grounded for a week.

Sarah :Oh, my god. That is so stupid. I swear, I'm leaving as soon as I turn 18.

The dialogue above show Sarah's Ego. This is linked with Ratna's statement (2004) that Literary psychology plays a vital part in assessing a literary work by focusing on the character's psychological point of view; by focusing on the character, it is possible to evaluate the inner conflicts inherent in literary works. Sarah stated her words that her father is so controlling. Her Ego wants to be free, as what teenage girl in her age did. Sarah wants to live freely and travel the world once she reaches her legal age. He will start his journey from Florida, and it is his dream. as a person who loves freedom, Sarah is very much against Don who wants everything to happen as he wishes.

When they have a conversation on Sarah's bed, accidentally Don heard what kind of things they talk about outside Sarah's room. He seems unhappy due to Sarah's plan. Don try to hold his anger with go to the basement and calm his mind with hold a handball. Here, Don's Superego appeared. Instead of interrupting, Don choose to take a time for himself. The Superego theory by Freud in *Psikologi Sastra* book by Minderop (2013) is in charge of restraining and inhibiting the gratification of the Id's drive.

Tabel 4 6 (Scene 6)

Scene 6 (10:28 – 11:48)



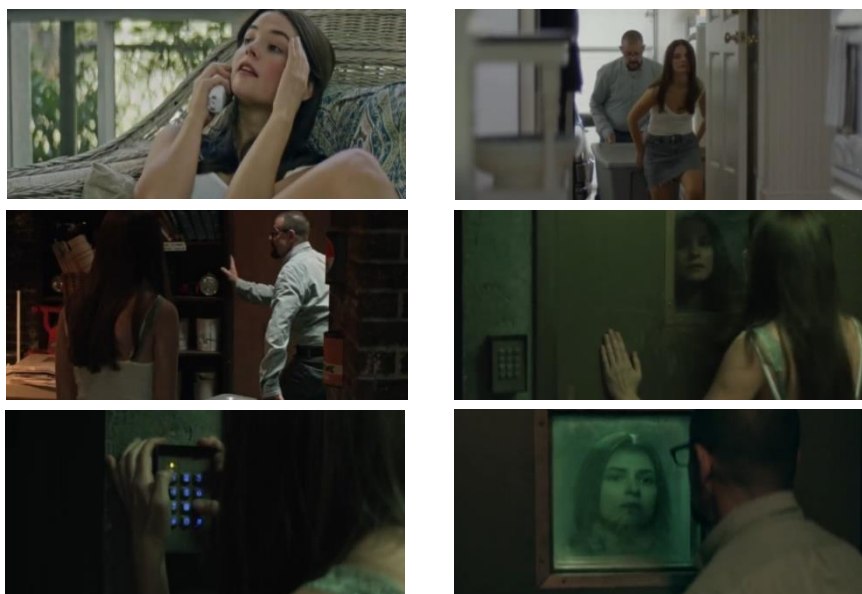
Don accidentally heard Sarah's plan and feel mad. Instead of interrupting, Don take a time for himself in the basement and found a Bomb Shelter

In this scene, there's no dialogue. But this scene show how triggered Don with what he heard about Sarah's plan. But in the same time, Don found a hidden place in the basement, a bomb shelter. After found this place, Don's crazy idea start to comes up. And this is linked with Minderop (2013) about Ego. Don's Ego contaminate his mind because he still want his little Daughter, Sarah, still under his control.

After some times, Sarah graduate from high school. She is getting close to 18 and more close with her boyfriend, Chris. One day when Sarah was on the phone with Chris, Irene asked Sarah to go to the supermarket together, but she refused because she was talking to Chris on the phone. After her mother left, only Don and Sarah were left in the house. This opportunity was not wasted by Don obviously.

Tabel 4.7 (Scene 7)

Scene 7 (13:08 – 17:00)



Don ask for sarah's help to bring a container and put it in the basement. Sarah didn't know that her father aimed to locked her in the bomb shelter

Sarah : What is this place?

Don : Previous owner built a bomb shelter. I made some improvements. Well, put that end over there. And here we go. What do you think?

Sarah : I mean, it kinda sucks. There is no windows.

Don : You don't like it?

Sarah : Dad.

Don : That's too bad.

Sarah : What are you doing, dad? Dad, what are you d...

[Door shuts]

Sarah : Dad! Dad! Let me out! Help! (beeping, screaming)

From the dialogue above, Don's Ego, which dominates Id, appears. This personality structure is linked to Minderop (2013). Don locked Sarah up and didn't even care about Sarah's feelings because he thought this was the best way to give her a punishment. While the personality structure that appeared in Sarah is Id, Linked with Minderop (2013), Sarah's Id takes over her emotion, which is fear. Locked in the basement with no facilities available, it is such a nightmare. She screamed loudly to ask for help, begging her father, and also tried to open the key code. But all her efforts were for nothing.

After four days locked there without food, Sarah almost gave up. In the upstairs room, Irene and Amy start to ask the police to find Sarah. Don't insist on telling Irene and Amy that Sarah ran away to cover up what she did. He uses Sarah's dream of traveling the world as a pretext to further convince people of Sarah's disappearance so that he can be exonerated. Don comes to the basement to inspect Sarah's condition. Aware of her Dad's appearance, Sarah takes action to get out of the basement. Sadly, the bomb shelter has a double door with a key code that only Don knows.

Tabel 4 8 (Scene 8)

Scene 8 (17:43 – 21:20)



Sarah try to get out of the basement, but sadly Don get the limit of his patient. So he give Sarah a “lesson”

Sarah : Why are you doing this?

Don : Life is a series of interactions. Action, reaction. Choices, consequences. You chose to be disrespectful, and this is your consequence.

Sarah : Help! Someone! Ugh (try to open the door)

Don : This vent is where you get your air if I say you do. You eat when I say you do. You want a blanket, a book, you can have those things if I say you can. Everything that you get now, every privilege, you will earn. You understand?

Sarah : (silent)

Don : Do you understand? Fine.

Sarah : Ah. Damn.

In this scene, both Don and Sarah hold tight to their egos, which are dominated by Id. Linked with Minderop (2013), their Ego is fueled by their identity. Sarah has a fear, so she keeps trying to get out of the basement, while Don gets mad because of what Sarah did. Sarah didn't obey his need to be a "good" girl, in his opinion. Because of that, Don raped Sarah without thinking that she was his own daughter. In this scene, Don's Id isn't just about anger but also his desire to have sex.

After receiving bad treatment from her father, Sarah began to get frustrated with the situation and had given up hope of getting out of it easily. Every time she wants to try to unlock the keycode, three failed attempts can shut off the power, which shuts off the ventilation system. Don changed the code every day. The basement is soundproof, so no matter how hard Sarah tries to scream, nobody can hear her.

Tabel 4 9 (Scene 9)

Scene 9 (24:30 – 25:58)



Sarah start to think that everything she could do to escape from the basement were hopeless. She try to remember about sweet memories with her boyfriend and sing their song to calm her mind

In this scene, Sarah's Superego appears. Linked to Minderop (2013), the Superego lead Sarah to press her Id because there is no way out of the basement. She starts to think her abusive father won't let her get out of there easily. She had received acts of violence that caused bruises in several parts of his body. Sarah's Superego helps her to calm her emotions by singing the song that her boyfriend created for her and also remembering some sweet moments with her boyfrien, Chris.

Above the basement, Don was mowing the grass. Chris came with the intention of finding out if Sarah was already at home and also bringing Sarah's helmet that he had already bought for her. But Don, with his manipulative ways, makes up imaginary stories that can hurt Chris' heart.

Tabel 4 10 (Scene 10)

Scene 10 (26:05 – 27:51)



Chris ask for Sarah's existence to Don, but Don keep try to hide Sarah's appearance from all people.

Chris : Uh, look, is Sarah back? The cop, cops called me looking for her. I-I wanted to come by, see if you heard anything. Just wanted to, I wanted to bring her this.

Don : Um, she didn't tell you?

Chris : Tell me what?

Don : She didn't say anything about Steve?

Chris : S-Steve? Steve who?

Don : Sarah and Steve were best friends in the old neighborhood since, like, first grade. She always said that she was gonna run away with him one day, and right after graduation, she did.

Chris : Wait, so you're, you're, you're trying to tell me that Sarah ran off with some guy named Steve?

From the conversation above, Don's Ego appears in order to hide the truth about Sarah's appearance. Linked to Minderop (2013), the Ego comes up and is boosted by Don's Id. He doesn't want Chris to know where Sarah is. So he manipulated Chris with the wrong information that he made up to break Chris's heart. Steve is an imaginary character that never existed. Therefore, don't use this method so that Chris won't search for Sarah any longer.

Day by day, Sarah has been locked in the basement for 21 days. That day coincided with his 18th birthday. Because she lived in the basement without any equipment, Sarah even forgot that it was her birthday. Don arrives with cakes and gifts for Sarah. But among the things that Don brought, there was one that Sarah didn't expect.

Dominant Id, Ego and Superego of Don and Sarah

After analyze 32 scenes of Don and Sarah inner conflict Id, Ego and Superego by scenes in the *Girl In The Basement* (2021) Movie, the writer found the most dominant personality structure in their inner conflicts. As the analysis in 4.1 point, the author find the data based on Freud's psychoanalysis theory in *Psikologi Sastra* by Minderop book (2013).

Don's Dominant Id, Ego and Superego

From 32 scenes in total, Don's Id appeared in 20 scenes, while his Superego appeared in 8 scenes. From these 32 scenes, Don was not appeared in 7 scenes. Don's Id dominated him due to his natural characteristic. He is rude, arrogant, aggressive, intelligent, manipulative and accountable. Based on Freud's theory of Psychoanalysis in *Psikologi Sastra* by Minderop book (2013), Id is the most fundamental layer of the psyche, containing intrinsic instincts (sexual and violent) as well as repressed urges. The Id became the foundation material for further psychic formation and was unaffected by the Ego's control or the reality principle. The Id is outfitted with two types of procedures. The first process is reflex actions, which are a type of behavior or action including a variety of complicated psychological reactions. So Id is the most fundamental system that people own. Id does not require commands from other systems because it is self-contained.

Sarah's Dominant Id, Ego and Superego

From 32 scenes in total, Sarah's Id appeared in 14 scenes, while his Superego appeared in 17 scenes. From these 32 scenes, Sarah was not appeared in 5 scenes. Sarah's Superego dominated her due to his natural characteristic. Sarah is a disobedient, smart, motherly, brave, patient and independent. Based on Sigmund Freud's theory of Psychoanalysis in *Psikologi Sastra* by Minderop book (2013), Superego is in charge of restraining and inhibiting the gratification of the Id's drive. The Superego is also a function of parental instruction and association with values and social behavior patterns. Humans are required by their superego to always behave well.

Conclusion

Based on the discussion above, the writer finds two conclusions. First, Don and Sarah have Id, Ego and Superego that emerge in the *Girl In The Basement* (2021) movie. Don's Id guides him to lock Sarah in the basement as a punishment because Sarah disobeyed him. Don's Ego attracts him to a manipulative nature to be able to cover up Sarah's true existence. The Superego that emerges in Don is when he remains responsible to Sarah and her children. Sarah's id wants the freedom of life in her teenage years. Sarah's Ego has a high desire to be able to live with the love of her life, Christopher. However, her Superego must take over she is placed in a bomb shelter that no one knows about except Don. Second, the writer finds the dominant Id, ego and superego on the characters Sarah and Don. Based on the 32 scenes already analyzed, the most dominant personality structure on the character Don is Id. While the dominant personality structure on Sarah's character is the Superego.

The results of the research that have been presented by the writer also show how the ending of the story is caused by the dominance of Don's Id and Sarah's Superego. Don, who is strongly influenced by his Id, does terrible things without thinking about the consequences that occurred. He is only physically and verbally abusive which always makes him obeyed by Sarah. However, what he did resulted in him becoming a criminal and he was sentenced to prison by the authorities. Sarah, who was influenced by her Superego, got the justice and freedom she dreamed of for 20 years. Her patience resulted in her and her children being able to live as normal human beings again. The writer also hopes that this research can add insight for readers about Sigmund Freud's psychoanalysis

theory. Thus, this research can be a reference for further research that examines the *Girl in the basement* (2021) movie object, as well as the use of psychoanalysis on other objects.

Bibliography

- Aprilia, W., Natsir, H. M., Valiantien, N. M. (2021). *Elizabeth Bennet's Personality In The Novel Pride And Prejudice (A Study Of Psychology Of Literature)*. <https://e-journals.unmul.ac.id/index.php/JBSSB/article/view/4346>. Accessed on May 20th, 2023.
- Dewinta, Lia. (2019). *Psychological Conflict Between Characters Of Father And Son In Animated Movie How To Train Your Dragon*. Jurnal Pujangga Volume 5, Nomor 1, Juni 2019. <http://journal.unas.ac.id/pujangga/article/view/729/0>. Accessed on May 20th, 2023.
- Girl In The Basement*. Directed by Elisabeth Röhm. Big Dreams Entertainment, Lifetime, Swirl Films. 2021.
- Hall, G. Stanley. (1920). *A General Introduction To Psychoanalysis*. Pdf Books World.
- Herdayanti, Kicki., Satria, Robby. (2021). *Psychological Conflict Of The Main Character Reflected In Lady Bird Movie*. Journal Basis Vol. 8 No. 2 October 2021. <https://ejournal.upbatam.ac.id/index.php/basis/article/view/3766>. Accessed on May 20th, 2023.
- Hornby, A. S. (2015). *Oxford Advanced Learner's Dictionary of Current English*. Oxford University Press.
- Liskamalia, Besse. (2012). *Child Abuse In Danny Boyle's Movie "Slumdog Mollionaire"*. <http://repositori.uin-alauddin.ac.id/9951/>. Accessed on May 7th, 2023.
- Lismawati, Ika. (2022). *Analysis Of Doctor Moreau Psychological Conflict In The Islaand Of Doctor Moreau Novel By Hg Wells*. <http://repository2.unw.ac.id/2572/>. Accessed on May 7th, 2023.
- Masyhur, M. A., Fithratullah, M., Kasih, E. N. (2023). *A Psychoanalysis Internal Conflict of Bruce Wayne as seen in Matt Reeves' The Batman (2022) movie*. ISSN 2656-6842. <https://ejurnal.teknokrat.ac.id/index.php/teknosastik/article/view/2285>. Accessed on May 20th, 2023.
- Maulanie, Nurul Hikmah. (2011). *An Analysis Of Esther's Psychopath Problem In Orphan Film Viewed From Psychoanalysis Theory Ny Sigmund Freud*. <https://repository.uinjkt.ac.id/dspace/handle/123456789/3012>. Accessed on May 20th, 2023.
- Minderop, Albertine. (2013). *Psikologi Sastra* (3rd ed.). Yayasan Pustaka Obor Indonesia.
- Morgan, G. A., Ph, D., J, Robert., M.D, Harmon. (2001). *Clinicians' Guide To Research Methods And Statistics : Data Collection Techniques*. <https://doi.org/10.1097/00004583-199908000-00023>. Accessed on May 20th, 2023.
- Pahleviannur, Muhammad Rizal. (2022). *Metodologi Penelitian Kualitatif*. Pradina Pustaka.
- Romalyana, Feni. (2012). *Analisis Struktur Kepribadian Tokoh Utama Dalam Film Buxiude Shiguang 《不朽的时光》 Karya Yan Ran (闫然) (Kajian Psikoanalisis Sigmund Freud)*. <https://ejournal.unesa.ac.id/index.php/manadarin/article/view/23652/21626>. Accessed on May 20th, 2023.
- Sugiyono. (2019). *Metode Penelitian Kuantitatif, Kualitatif, dan R&D*. Alfabeta.
- Susilowati, E., Waluyo, N., Academy, N., Gedong, J., Candi, S., & Ungaran, R. (2013). *Psychological Structural Analysis to "A Child Called It" by Dave Pelzer*.
- Wandira, J. C., Hudiyono, Y., Rokhmansyah, A. (2019). *Kepribadian Tokoh Aminah Dalam Novel Derita Aminah Karya Nurul Fithrati: Kajian Psikologi Sastra*. <https://e-journals.unmul.ac.id/index.php/JBSSB/article/view/2114>. Accessed on May 20th, 2023.
- Wellek, R., & Austin, W. (1989). *Teori Kesusastraan*. Gramedia.